



**Monier™**  
ROOFING

**LOOK BOOK**

Your guide to the latest trends in home design & roofing

**CSR**





---

## 7 reasons why you should choose tiles

The roof generally makes up 30 percent of the surface of your home. First impressions count and can add significant value to your home, so it's important to get it right.

1. Tiles can create the right look for your home
2. Tiles are best suited for the Australian conditions
3. Colour lasts longer on tiles
4. Tiles will not corrode or rust
5. Monier tiles come with warranties you can trust
6. Tiles are resistant to high winds
7. Tiles can be used on low-pitched roofs



Order a sample

# DESIGN A CLEVER & STYLISH HOME

WITH MONIER ROOFING

When building or renovating your dream home the selection process is an exciting and memorable experience.

One of the largest and most visible external features of your home is the roof. We know choosing the right colours and materials for your dream home is important, that's why Monier has created this Lookbook which showcases the latest trends in Australian home design to help simplify your decision.

Within this Lookbook, you will find eight stunning trends, all the way from the Hamptons, down to the urban cities of Australia. Each look contains key materials and colour selections required to create and achieve the look you want, from the roof down.

To ensure you get the best design advice, Monier collaborated with Bree Leech, a Melbourne based designer specialising in the creation of beautiful projects. With over 20 years of trend forecasting experience in various design disciplines within the commercial and residential design industry, Bree brings her insightful knowledge of the design world to our Lookbook.

Whether you want to make a strong statement, achieve a long-lasting beautiful family home, or something in-between, this Lookbook will inspire you to start your build journey with confidence.



PG 10

LOOK TWO  
**URBAN  
INDUSTRIAL**



PG 22

LOOK FOUR  
**AUSTRALIAN  
COASTAL**



PG 04

LOOK ONE  
**HAMPTONS**



PG 16

LOOK THREE  
**ULTRA  
CONTEMPORARY**

PG 28

LOOK FIVE  
**COUNTRY  
ESTATE**



PG 34

LOOK SIX  
**TRADITIONAL  
HERITAGE**



PG 40

LOOK SEVEN  
**DESIGNER  
HOME**

PG 46

LOOK EIGHT  
**SCANDI  
STYLE**





A custom-built Hamptons style home by Masterton Homes featuring Monier Tiles, Concrete Horizon in Barramundi



Concrete Madison in Soho Night



Concrete Horizon in Barramundi

# HAMPTONS

The Hamptons is an area north of New York where the wealthy escape to large relaxed beach side homes during the summer months. This lifestyle of carefree summer living has inspired the Hamptons style home both inside and out.

The Hamptons exterior finds its roots in Georgian architecture reinterpreted for a more relaxed look. A certain sophistication ensues through the signature characteristics of the Hamptons home which include shingle style roofing, Georgian or half Georgian windows, French doors and an expansive verandah.

Colour palettes are minimal and classic, muted colour is favoured especially in grey and always paired with the contrast of a white trim. Materials featured in the Hamptons style can include weatherboards and stone features or for a more durable and long-lasting build the integrity of brick in lighter stone shades and whites becomes relevant.

Celebrating outdoor living is an important aspect; a wide verandah and large windows which is perfect for our Australian lifestyle. Add some Adirondack chairs to fully complete the Hamptons look.

- 1 Porthole from Trend Windows (can be custom made)
- 2 Corinthian Doors Classic PCL 4 Entrance Door or Corinthian Doors Classic PCL 4G Entrance Door
- 3 Adirondack Chair
- 4 Hampton style Balaustrade and fencing, Finlayson EH8
- 5 Timber Double Hung Windows from Stegbar
- 6 Dulux Vivid White™ + Dulux Grey Pail
- 7 Balmoral Weatherboards, Cemintel
- 8 White Oak Country LedgeStone from Cultured Stone, supplied by PGH Bricks & Pavers
- 9 Walker Medium Wall Lantern by Hinkley Lighting from Lightco
- 10 Classic Statesman with Stockton Window Design, BND Garage Doors



Concrete Madison in Soho Night







Concrete Madison in Soho Night

## Concrete

### Horizon

 C-LOC™ Colour Lock Technology

Concrete is well suited to the Hamptons look and the Horizon profile delivers a sleek yet sophisticated flat profile. Just like concrete bridges and structural elements of buildings, concrete tiles get stronger with age. This inner strength will go on to protect your home for the years to come and with a palette of 11 inspirational colours to choose from, Monier's Horizon tile will enhance the look of your new home perfectly.

#### Get the look

Roof pitch minimum 15° with sarking<sup>^</sup>

A-line Ridge



## Concrete

### Madison

 C-LOC™ Colour Lock Technology

Madison creates an aesthetic that is unashamedly minimalist and stylish. This roof tile features a centre shadowline that imitates a traditional shingle roof featured on Hamptons homes. When combined with our C-LOC™ Technology to retain its gloss 8 x better than standard Colorbond® steel\*, it's an economical choice to help you keep delivering a traditional Hamptons look for the years to come.

#### Get the look

Roof pitch minimum 15° with sarking<sup>^</sup>

A-line Ridge



\*Product samples are independently tested in a NATA certified lab for 2,000 hours with cycles of UV exposure and condensation to simulate natural weather exposure. Testing has been performed on product samples of similar colour for fair comparison.

<sup>^</sup>Sarking must be used under 20°. Check with local government requirements.

## Terracotta

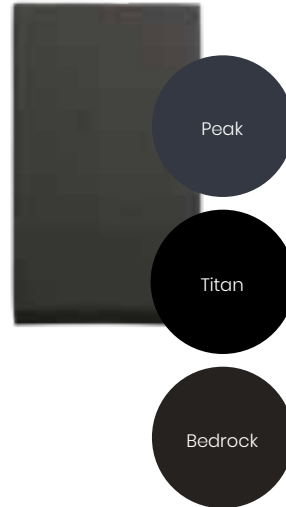
### Urban Shingle

☀️ Colour that lasts

The Urban Shingle Terracotta tile is made from natural Australian clay and fired at a temperature of over 1000°C, baking the colour right into the tile. It's ideally suited to the design of the classic Hamptons style home, and with a range of modern colours, the Urban Shingle tile provides quality and elegance to your Hamptons home.

#### Get the look

Roof pitch minimum 18° with sarking^  
A-line Ridge



## HOT TIP

Touches of timber is the key to the Hamptons look. Topped off with a slate-style roof, usually in a dark grey or charcoal, these houses are often in pale shades of blue, green and grey with white trim. Many modern Australian homes are rendered brick veneer with timber cladding. Some modern Australian home owners are also choosing soft greys for exterior colours. A large wrap-around verandah complete with detailed timber fretwork adds the necessary decorative touches.





Urban Industrial Home featuring Monier Tiles, Concrete Madison in Soho Night. PGH Bricks: Distinctively Melbourne - Eaglemont



Concrete Madison in Soho Night. PGH Brick: Eaglemont



Concrete Horizon in Sambuca. PGH Brick: Smooth Red

# URBAN INDUSTRIAL

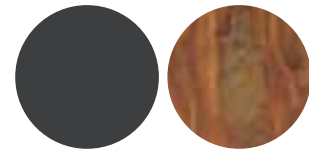
Inner city living and the conversion of industrial spaces such as warehouses and workshops into residential dwellings inspires the modern aesthetic of Urban Industrial.

A mix of raw materials and refined features create contrast on the façade. Brick and reclaimed timbers are all prominent features with finishes varying from perfectly powder-coated to rusted and worn.

Colour palettes are kept simple and relatively moody – charcoal and grey being prominent choices offset by warm earthy tones of reds and browns often seen in brick or timber. A rust finish can be used as a feature on landscaping elements or architectural details such as doors.

The architecture of Urban Industrial is geometric, often with large metal-framed windows in dramatic forms such as full height or extra wide. Creative use of roofing tiles adds an industrial feel to the exterior whilst landscaping is kept minimal, features might include a vertical garden or sculptural forms.

- 1 Norwest Wall Bracket in Aged Nickel by Lucci Fresco from Beacon Lighting
- 2 Mailbox from Esty
- 3 Fire Away Original Fire Pit in Rust from Fire Pits Direct
- 4 Dulux Rust Effect + Dulux Domino
- 5 Copper Pearl Orbit Door, Custom Size by Axolotl
- 6 Double-steel doors with fixed side windows by Steel Window Design
- 7 Territory Woodlands Teak from Cemintel
- 8 Endeavour from the Crafted Sandstocks range by PGH Bricks & Pavers
- 9 Acrylic Garage Door Range from Steel-Line Garage Doors



Concrete Madison in Soho Night

Bricks displayed may not always be available. Please enquire for replacements.



Concrete Madison in Soho Night PGH Bricks: Distinctively Melbourne - Eaglemont

## Concrete

### Horizon

 C-LOC™ Colour Lock Technology

Concrete is well suited to the Industrial look and the Horizon profile delivers a sleek yet sophisticated flat profile. Just like concrete bridges and structural elements of buildings, concrete tiles get stronger with age. This inner strength will go on to protect your home for the years to come and with a palette of 11 inspirational colours to choose from, Horizon tile will enhance the look of your new home perfectly.

#### Get the look

Roof pitch minimum 15° with sarking<sup>^</sup>  
A-line Ridge



## Concrete

### Madison

 C-LOC™ Colour Lock Technology

Madison creates an aesthetic that is unashamedly minimalist and stylish. This roof tile features a centre shadowline that imitates a traditional shingle. When combined with our C-LOC™ Technology to retain its gloss 8 x better than standard Colorbond® steel\*, it's an economical choice to help you keep delivering an Urban Industrial look for the years to come.

#### Get the look

Roof pitch minimum 15° with sarking<sup>^</sup>  
A-line Ridge




\*Product samples are independently tested in a NATA certified lab for 2,000 hours with cycles of UV exposure and condensation to simulate natural weather exposure. Testing has been performed on product samples of similar colour for fair comparison.  
<sup>^</sup>Sarking must be used under 20°. Check with local government requirements.



## Terracotta

Nouveau

 Colour that lasts

With clean, streamlined lines, Nouveau reflects the sleek and refined finish that is characteristic to any modern architecture. Combined with our latest grey-toned palette and metallic finish, it will create a sophisticated yet contemporary look for your home. And when it comes to performance and colour, nothing is longer lasting than Terracotta.

### Get the look

Roof pitch minimum 12° with sarking^  
A-line Ridge



## HOT TIP

Exposed brick walls, copper piping and concrete floors are the key elements of this style, topped off with a slate-look roof or terracotta roof.



Ultra Contemporary Home featuring Monier Tiles, Concrete Atura in Sambuca



Concrete Horizon in Barramundi



Terracotta Marseille in Titan Gloss

# ULTRA CONTEMPORARY

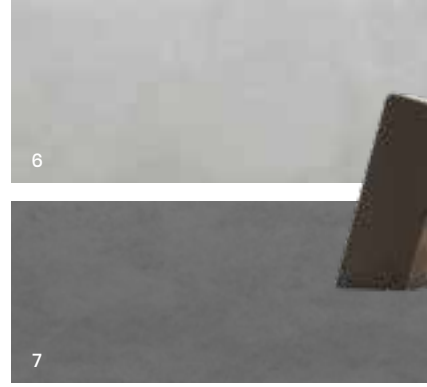
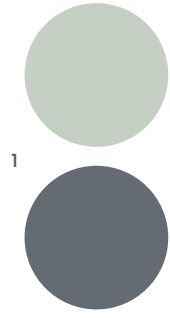
The essence of the Ultra Contemporary style home is found in mid-century modernist architecture which prides itself in unadorned simplicity. Clean lines and minimal forms combined with mixed materials result in the Ultra Contemporary home.

A wide range of exterior finishes are used including render, weatherboard, concrete cladding, or brick – but the clean lines, angular shapes and cubic forms in the architecture of the home are really what make it contemporary.

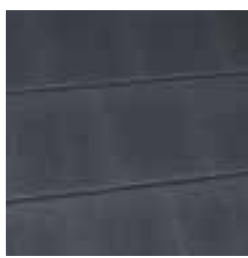
Cool colours make up the palette – charcoal, grey, cool greens and stone colours create the colour schemes in the Ultra Contemporary exterior. Timber provides warmth and is found in details such as entry doors or landscaping features. Metal provides a modern detail in windows and lighting.

Windows are large with minimal framing and often their placement adds to the interest of the exterior. Landscaping appears ordered and neat and may feature stone as a ground cover and foliage such as simple grasses and succulents is placed sporadically.

- 1 Dulux Silver Grass + Dulux Guild Grey
- 2 Double-steel windows by Steel Window Design
- 3 Manhattan Cube Planters from lotagarden.com.au
- 4 Pewter from the Metallic range by PGH Bricks & Pavers
- 5 Corinthian Doors DECO PV 2S Pivot Door
- 6 Territory Quarry Urban Grey from Cemintel
- 7 Barestone in Ash from Cemintel
- 8 Game Bollard by Torremato from Lightco Lighting
- 9 Venice outdoor fire place from lotagarden.com.au



Concrete Horizon in Barramundi





Concrete Horizon in Barramundi

## Concrete

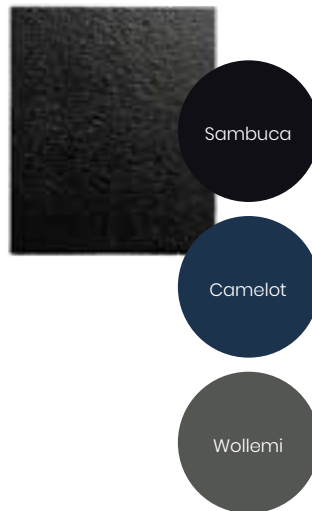
### Horizon

 C-LOC™ Colour Lock Technology

Horizon is the ultimate flat concrete roof tile. It's designed to deliver a streamlined look and with a palette of 11 inspirational colours, it's the most economical roofing material on the market when choosing a modern, contemporary look.

#### Get the look

Roof pitch minimum 15° with sarking<sup>^</sup>  
A-line Ridge



## Concrete

### Cambridge

 C-LOC™ Colour Lock Technology

Cambridge Concrete tiles deliver a look and feel that best complement the Ultra Contemporary home. With its hewn stone finish, Cambridge replicates the slate look. C-LOC™ Colour Technology allows our tile to retain its gloss 8 x better than standard Colorbond® Steel\*.

#### Get the look

Roof pitch minimum 15° with sarking<sup>^</sup>  
A-line Ridge



\*Product samples are independently tested in a NATA certified lab for 2,000 hours with cycles of UV exposure and condensation to simulate natural weather exposure. Testing has been performed on product samples of similar colour for fair comparison.  
<sup>^</sup>Sarking must be used under 20°. Check with local government requirements.

## Terracotta

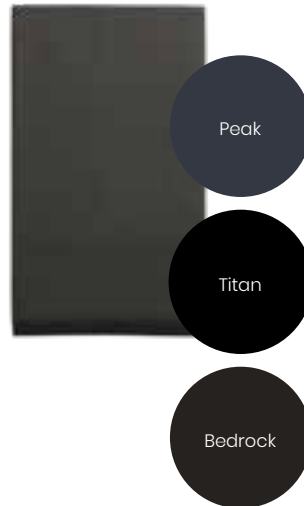
### Urban Shingle

☀️ Colour that lasts

The Urban Shingle Terracotta tile is made from natural Australian clay and fired at a temperature of over 1000°C, baking the colour right into the tile. It's ideally suited to the design of the Ultra Contemporary home, and with a range of modern colours, the Urban Shingle tile provides quality and elegance to your home.

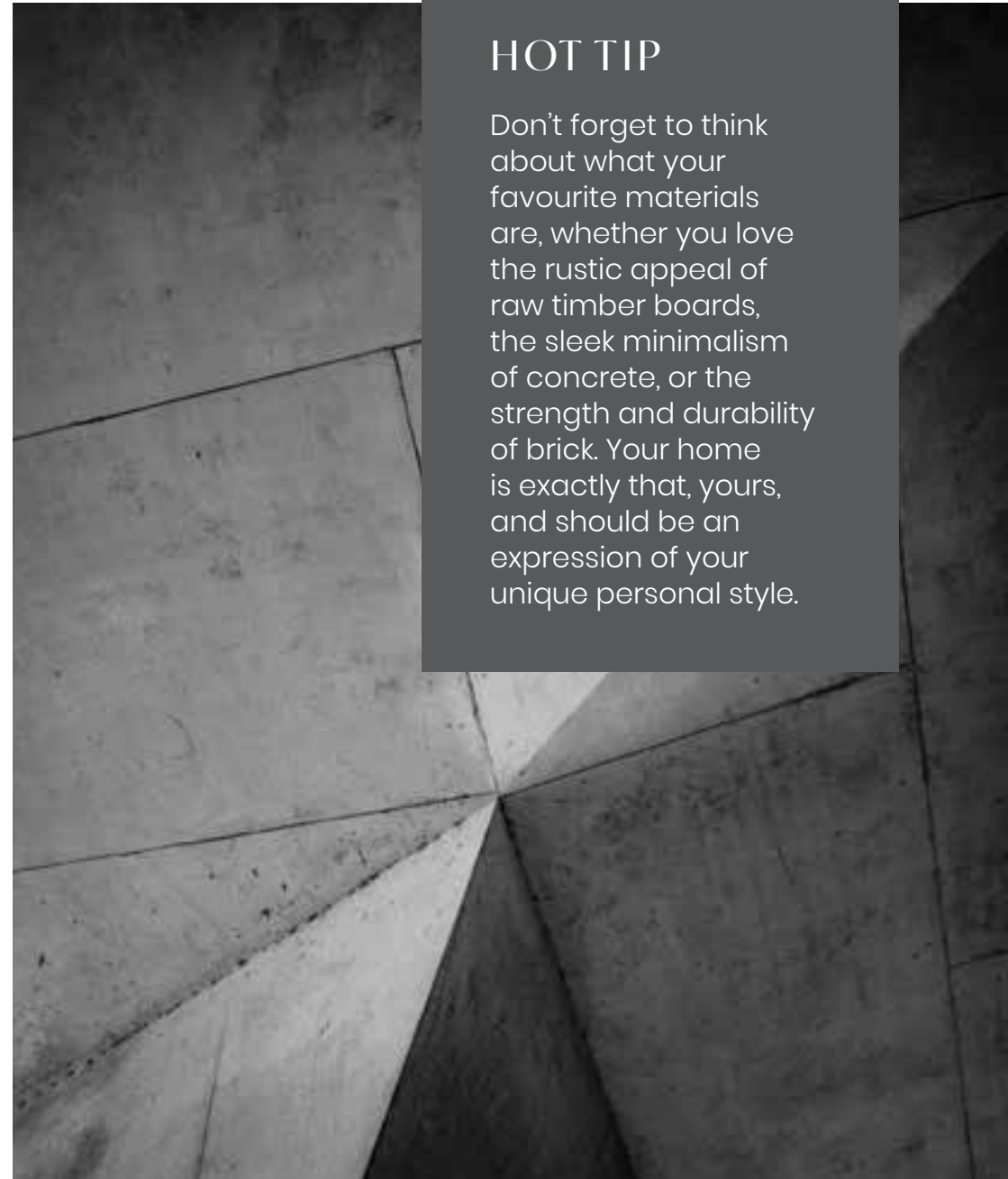
#### Get the look

Roof pitch minimum 18° with sarking^  
A-line Ridge



## HOT TIP

Don't forget to think about what your favourite materials are, whether you love the rustic appeal of raw timber boards, the sleek minimalism of concrete, or the strength and durability of brick. Your home is exactly that, yours, and should be an expression of your unique personal style.





Australian Coastal Home featuring Monier Tiles, Concrete Horizon in Salt Spray





Concrete Madison in Soho Night, PGH Bricks: Simply Hamptons - Fresh White



InlineSOLAR™ with Concrete Cambridge in Soho Night

# AUSTRALIAN COASTAL

The Australian coastline is a unique landscape, wild and beautiful it captures the hearts of Australians and visitors to our country alike making it a desirable location to build a home.

The architecture of Australian Coastal aims to capture this essence; made up of natural materials such as weathered timber and stone, this style is perfectly suited to native surroundings.

Colours blend into sand and sea – a mix of earthy and light natural colours capture the palette of the Australian coastline. Highlights of recycled or reclaimed materials promote sustainable practices. Australian Coastal building materials must withstand the harsh elements and be durable in tough coastal conditions, making Monier roof tiles the perfect roofing solution.

Low maintenance native Australian landscaping celebrates local flora and encourages native fauna to make their home there. Large expanses of glass, glass doors and louvre-style windows encourage indoor/outdoor living.

- 1 Porto Bollard by IL Fanale from Lightoo
- 2 LouverMASTER Adjustable Louvre Windows from AWS Australia
- 3 Winterhaven™ from the Pro-Fit® Alpine LedgeStone range of Cultured Stone, supplied by PGH Bricks & Pavers
- 4 Timber Decking
- 5 Banksia
- 6 Lump Shard Planters by Lump Sculpture Studio
- 7 Territory Woodlands Limed from Cemintel
- 8 Render to Garage Dulux Silver Jewel + Render to right hand side Dulux Brume Quarter



Concrete Atura in Salt Spray



Concrete Atura in Salt Spray

## Concrete

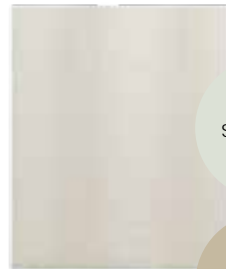
### Atura

 C-LOC™ Colour Lock Technology

Concrete tiles are tested to withstand the harsh Australian weather and won't ever rust. Atura comes in the wide selection of colours and is perfectly suited to the Australian Coastal look.

#### Get the look

Roof pitch minimum 15° with sarking^  
A-line Ridge



Salt Spray

Wild Rice

Silver Perch

## Concrete

### Horizon

 C-LOC™ Colour Lock Technology

Horizon is the ultimate flat concrete roof tile. It's designed to deliver a streamlined look and with a palette of 11 inspirational colours, it's the most economical roofing material on the market when choosing a modern, contemporary look.

#### Get the look

Roof pitch minimum 15° with sarking^  
A-line Ridge



Sambuca


Camelot

Barramundi

\*Sarking must be used under 20°. Check with local government requirements.

## Terracotta

Nouveau

 Colour that lasts

Monier Terracotta roof tiles are made from natural Australian clay and fired at a temperature of over 1000°C, baking the colour right into the tile, enabling it to withstand Australia's harshest weather elements. Nouveau Terracotta on an Australian Coastal home will always stand the test of time.

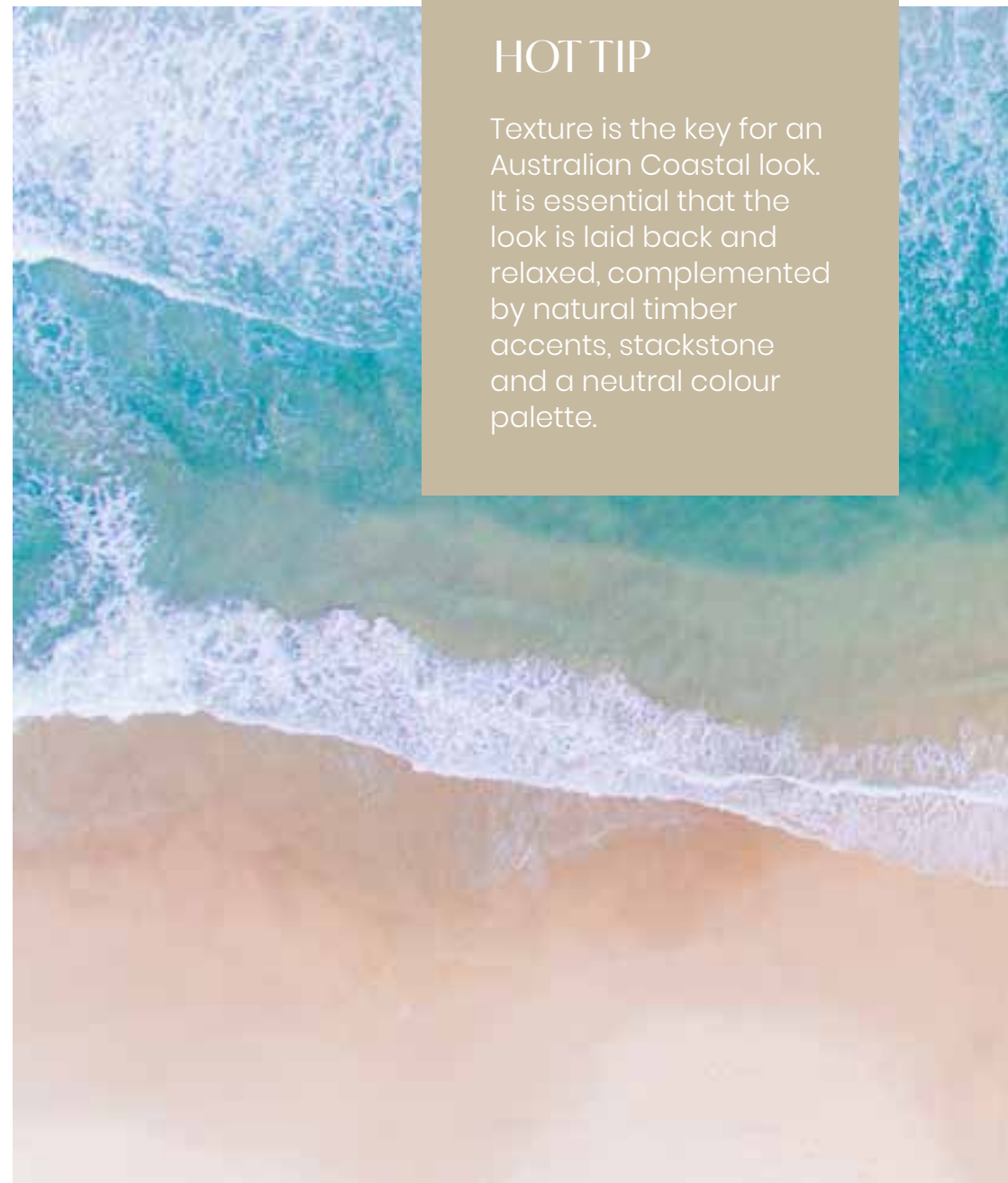
### Get the look

Roof pitch minimum 12° with sarking^  
A-line Ridge



## HOT TIP

Texture is the key for an Australian Coastal look. It is essential that the look is laid back and relaxed, complemented by natural timber accents, stackstone and a neutral colour palette.





Country Estate featuring Monier Tiles, Concrete Madison in Soho Night



Concrete Cambridge in Soho Night



Concrete Elabana in Barramundi

# COUNTRY ESTATE

A home in the country is a romantic notion, often seen as an escape from the pressures of city life, inspired by this idea the Country Estate conveys one of tranquil living in lush surroundings.

The Country Estate's architectural style provides a mix of traditional and contemporary elements to create a rural look blending with Australian bushland. The façade features mixed materials – classic brick in reds, creams and browns are an obvious choice to blend naturally with a country palette. Weatherboards combine with stone cladding or rendered finishes and accents of metal in details such as exposed barn-style hinges, lighting and outdoor furniture.

Warm natural and neutral shades are most fitting for the Country Estate and are complemented by stained timber details and features such as cobblestone paving to lead you down the garden path. Landscaping is less formal but still well maintained.

Key architectural features of a Country Estate are gable-style roof lines, casement windows, traditional finials, and the all-essential verandah. Add a weather vane for a true country touch.

- 1 Casement windows from Stegbar
- 2 Linnet from Dulux (S12B2) + Vivid White™ Dulux
- 3 Contrada Wall Light II Fanale from Lightco
- 4 Rooster weather vanes available from glenviewproducts.com.au
- 5 Kookaburra Picket Fence from Think Fencing
- 6 Lucca cobblestone from Eco Outdoor
- 7 Scarborough Weatherboard from Cemintel
- 8 Custom Built Country Style Garage Door from Danmar Doors
- 9 Planter boxes white from hamptonstyle.com.au



Terracotta Marseille  
in Riverstone





Terracotta Marseille in Riverstone

## Concrete

### Atura

 C-LOC™ Colour Lock Technology

Concrete tiles are tested to withstand the harsh Australian weather and won't ever rust. Atura comes in the wide selection of colours and is perfectly suited to the Country Estate look.

#### Get the look

Roof pitch minimum 15° with sarking^  
A-line Ridge



## Concrete

### Cambridge

 C-LOC™ Colour Lock Technology

Cambridge Concrete tiles deliver a look and feel that best complement the Country Estate. With its hewn stone finish, Cambridge replicates the slate look. C-LOC™ Colour Technology allows our tile to retain its gloss 8 x better than standard Colorbond® Steel\*.

#### Get the look

Roof pitch minimum 15° with sarking^  
A-line Ridge



\*Product samples are independently tested in a NATA certified lab for 2,000 hours with cycles of UV exposure and condensation to simulate natural weather exposure. Testing has been performed on product samples of similar colour for fair comparison.  
^Sarking must be used under 20°. Check with local government requirements.

## Terracotta

### Marseille

☀️ Colour that lasts

The Marseille, our French-inspired tile, offers practicality and simplicity for a classically styled roof. Available in a range of grey-toned and natural clay colours, the Marseille tile offers a timeless look to complete any design. Offering the colour longevity, strength, and durability of terracotta, the Marseille is ideal for homes of distinction.

#### Get the look

Roof pitch minimum 15° with sarking^  
A-line Ridge



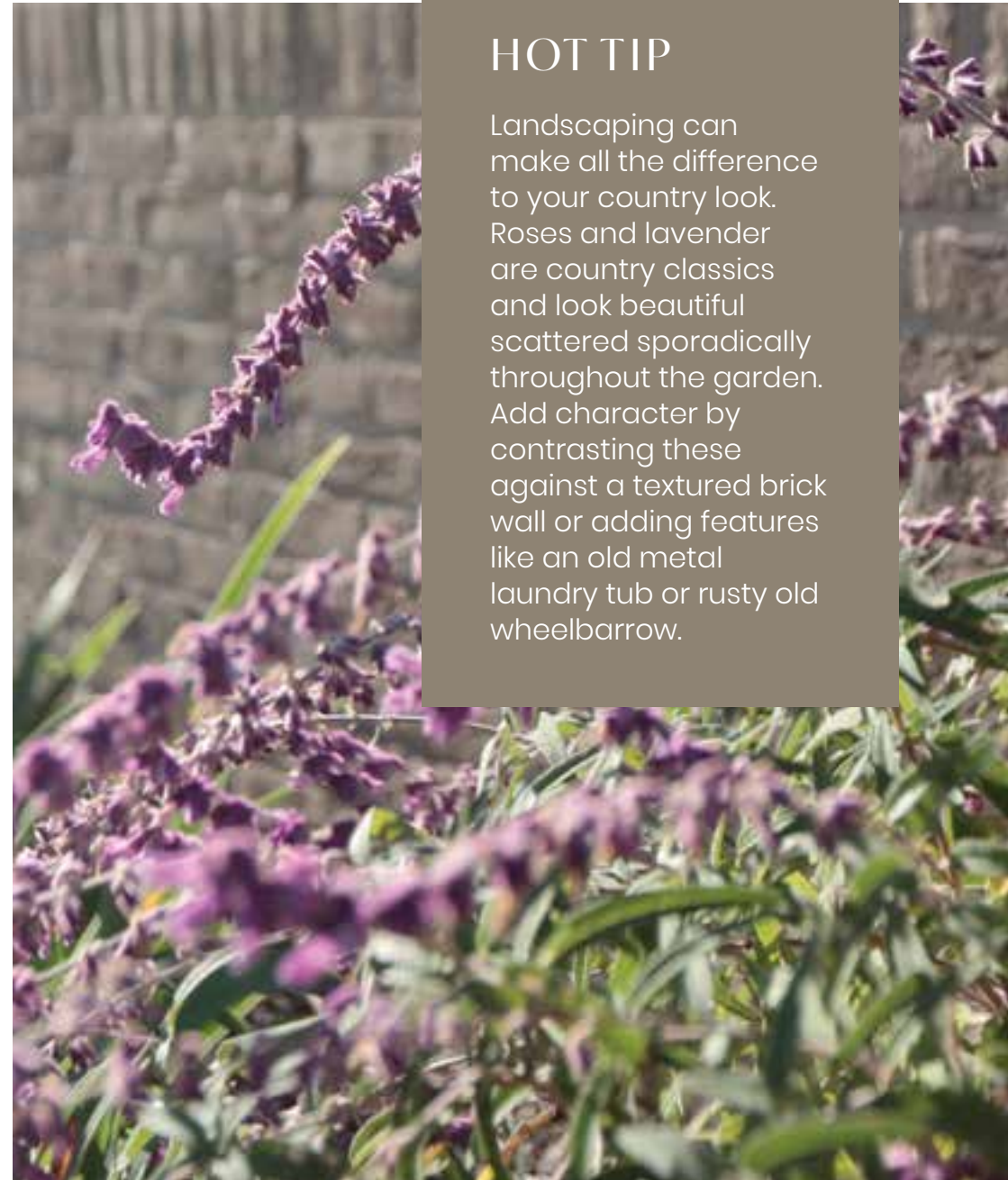
Mystic Grey

Delta Sands

Peak

## HOT TIP

Landscaping can make all the difference to your country look. Roses and lavender are country classics and look beautiful scattered sporadically throughout the garden. Add character by contrasting these against a textured brick wall or adding features like an old metal laundry tub or rusty old wheelbarrow.





Traditional Heritage Home featuring Monier Tiles, Terracotta Marseille in Earth



Terracotta Marseille in Earth



Terracotta Nouveau in Titan Gloss

# TRADITIONAL HERITAGE

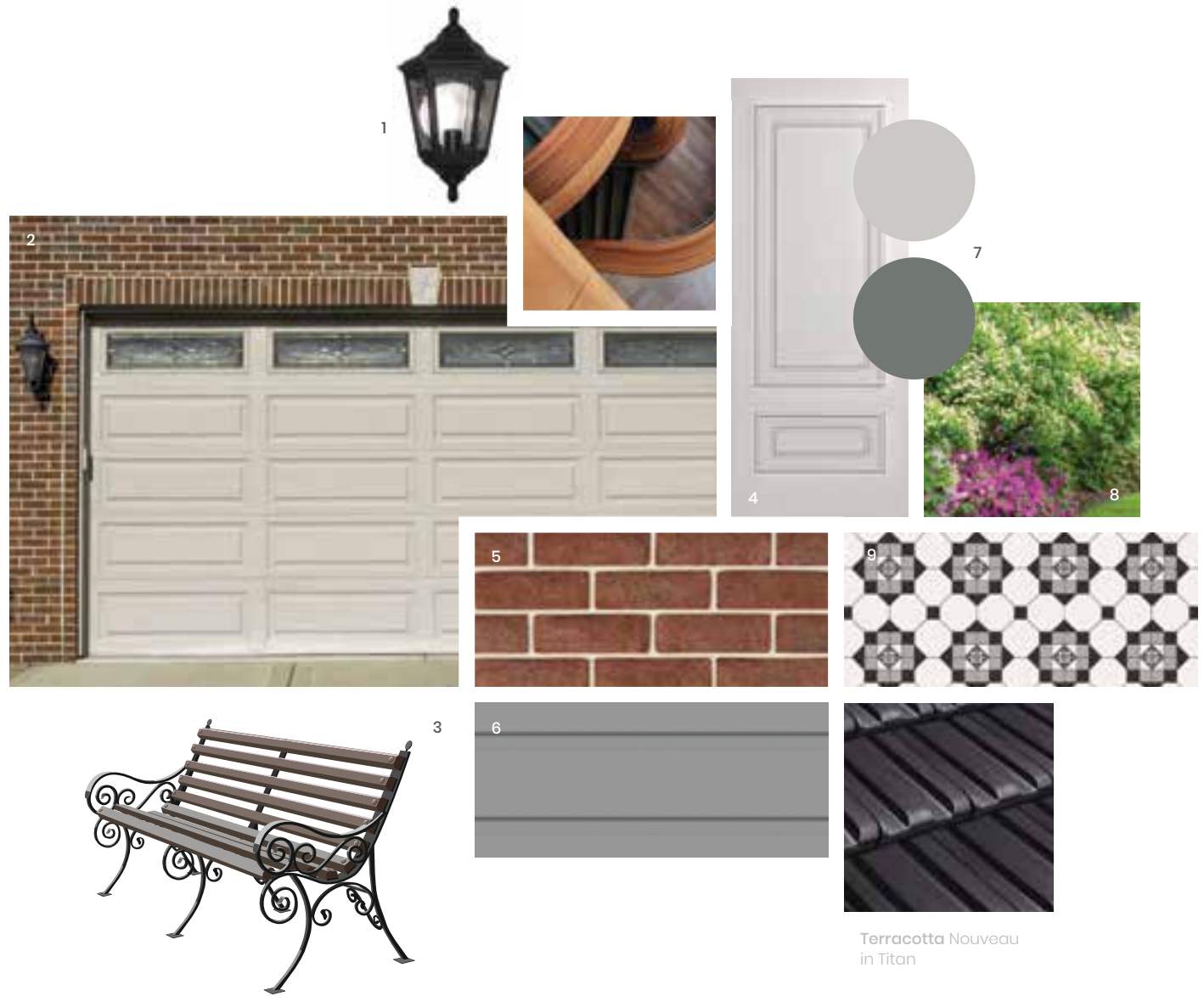
In Australia, a traditional home is one that features the attributes from the Victorian era of architecture. Inspiration is taken from miners' cottages and terrace houses to create the Traditional Home exterior style.

The Traditional Home has ornate features, which makes it very appealing to those wanting a more decorative look for their exterior. The home may be made up of brick, render, weatherboard, or a combination of these finishes. The roof once again features a gable finish with a slate or shingle-look roof tile which perfectly complements the homes traditional features. Add a modern touch by selecting a charcoal or grey roof tile for depth.

Colours are classic – cream, beige, warm whites, and traditional forest-style greens are popular choices but a more contemporary approach is often taken that includes charcoal and grey for an updated look. Brickwork is in a rich red, while featured stone may be bluestone or sandstone.

Windows with etched and stained glass, molded timber doors, finials, fretwork and tessellated tiles add ornate details to the exterior. Inspired by an English garden – well-manicured hedges, rambling roses and other traditional plantings complete the landscaping.

- 1 Kinsale Flush Lantern by Elstead from Lightco
- 2 Classic Statesman with Sherwood Window Design, BND Garage Doors
- 3 Traditional Garden Bench
- 4 XR4 Regency Entrance Door by Hume Doors & Timber
- 5 Chisholm from the Crafted Sandstocks range by PGH Bricks & Pavers
- 6 Headland Weatherboard from Cemintel
- 7 Dulux Unforgettable + Dulux Hildegard
- 8 Landscaping detail
- 9 Tessellated Tile Factory PT16



Bricks displayed may not always be available. Please enquire for replacements.



Terracotta Nouveau in Titan

## Concrete

Atura

 C-LOC™ Colour Lock Technology

Atura roof tiles are one of our most versatile and popular products. With a timeless and enduring look, this classically-styled roof tile retains an authentic charm that will enhance any modern or period Australian home. Atura comes standard with C-LOC™, so your roof will look better for longer.

### Get the look

Roof pitch minimum 15° with sarking<sup>^</sup>  
Lapped Ridge



Barramundi

Sambuca

Chilli

## Concrete

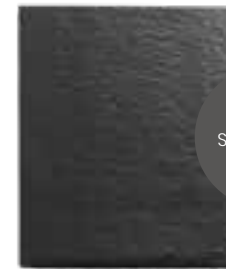
Cambridge

 C-LOC™ Colour Lock Technology

Cambridge Concrete tiles deliver a look and feel that best complement the Traditional Heritage style. With its hewn stone finish, Cambridge replicates the slate look. C-LOC™ Colour Technology allows our tile to retain its gloss 8 x better than standard Colorbond® Steel\*.

### Get the look

Roof pitch minimum 15° with sarking<sup>^</sup>  
Lapped Ridge



Soho Night

\*Product samples are independently tested in a NATA certified lab for 2,000 hours with cycles of UV exposure and condensation to simulate natural weather exposure. Testing has been performed on product samples of similar colour for fair comparison.

<sup>^</sup>Sarking must be used under 20°. Check with local government requirements.



## Terracotta

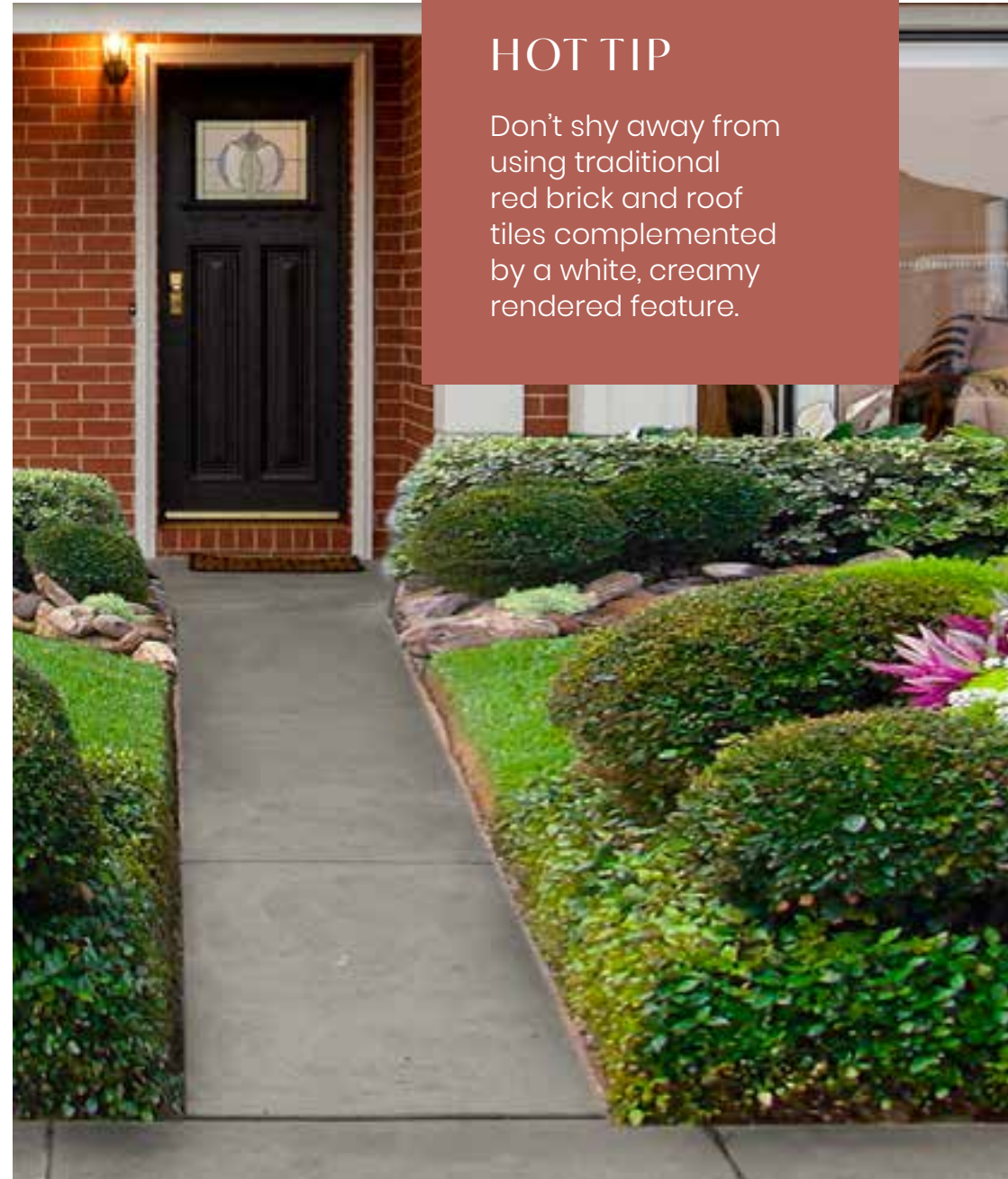
### Nouveau

☀️ Colour that lasts

The Nouveau is a tile that offers strong lines to create a modern twist on traditional design. Available in a range of grey-toned and natural clay colours, the Nouveau tile offers a timeless look to complete any design. For something different, try our Mars copper colour. Offering the colour longevity, strength, and durability of terracotta, the Nouveau is ideal for homes of distinction.

#### Get the look

Roof pitch minimum 12° with sarking^  
Lapped Ridge



## HOT TIP

Don't shy away from using traditional red brick and roof tiles complemented by a white, creamy rendered feature.



Designer Home featuring Monier Tiles, Concrete Atura in Barramundi



Concrete Horizon in Barramundi



Concrete Horizon in Sambuca

# DESIGNER HOME

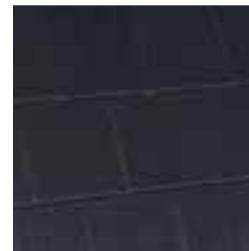
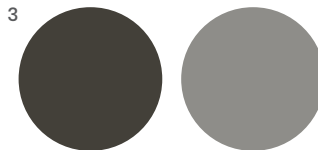
The Designer style home is one of the most popular when it comes to a new build or an exterior renovation, as it provides elements you can easily use to update the look of your home.

A combination of mixed materials including stacked stone, render and modern brick come together to create a layered contemporary look. Our flat roof tile range all work together with the Designer style home's exterior.

A neutral colour palette is essential, drawing on nature-inspired hues such as warm grey, beige and brown that work alongside the mix of natural materials and finishes included in the exterior.

A stone clad vestibule may frame the entry of the Designer home. Windows and doors may be powdercoated aluminum or stained timber. Landscaping provides a contemporary feel, garden sculptures or water features sit amongst Australian natives or architectural style plants such as Yuccas or decorative grasses.

- 1 A pair of Corinthian Doors Blonde Oak AWO 21 Entrance Doors (add stain to create your look)
- 2 Grass garden
- 3 Dulux Namadji® + Dulux Stepney
- 4 The Pendant Sculpture in Stainless Steel by Lump Sculpture Studio
- 5 Acrylic Garage Door Range from Steel-Line Garage Doors
- 6 Mono Down-Up wall light by Delta Light Outdoor Range from In Lite
- 7 Nepean Silver, Honed finish by Geostone
- 8 Gris Splits from the Morada range by PGH Bricks & Pavers
- 9 Vellum from the Modera Pro-Fit™ range of Cultured Stone, supplied by PGH Bricks & Pavers\*



Concrete Horizon in Sambuca

\* Product not available. Recommended replacement colour is PLATINUM from the PRO-FIT® LedgeStone Range.



Concrete Horizon in Sambuca

## Concrete

### Atura

 C-LOC™ Colour Lock Technology

Atura roof tiles are one of our most versatile and popular products. With a timeless and enduring look, this classically styled roof tile retains an authentic charm that will enhance any modern or period Australian home. Atura comes standard with C-LOC™, so your roof will look better for longer.

#### Get the look

Roof pitch minimum 15° with sarking^  
A-line Ridge



## Concrete

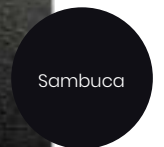
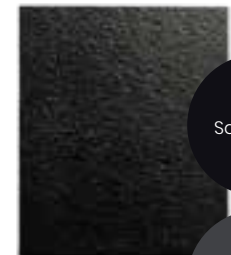
### Horizon

 C-LOC™ Colour Lock Technology

Horizon is the ultimate flat concrete roof tile and is designed to deliver a streamlined look that integrates seamlessly with current trends in Australian architecture. Available in a palette of 11 inspirational colours, Horizon roof tiles will enhance the look of your new home.

#### Get the look

Roof pitch minimum 15° with sarking^  
A-line Ridge



^Sarking must be used under 20°. Check with local government requirements.

## Terracotta

Nouveau

☀️ Colour that lasts

Nouveau is designed for a modern twist on a classic look. With clean, streamlined lines, Nouveau reflects the sleek and refined finish that is characteristic to any modern architecture. Combined with our latest grey-toned palette and metallic finish, it will create a sophisticated yet contemporary look for your home.

### Get the look

Roof pitch minimum 12° with sarking^  
A-line Ridge



## HOT TIP

Choose the focal points of your façade and make them pop: colour, textures and interesting materials are a great way to create focal points on your façade. For example, select certain features on your façade that you would like to draw visitor's eyes to, such as your roof. You could make a real statement and create the 'wow' factor by trying Monier's new metallic finishes in Terracotta.



Scandi Style Home featuring Monier Tiles, Concrete Atura in Barramundi





Concrete Madison in Soho Night



Concrete Horizon in Barramundi

# SCANDI STYLE

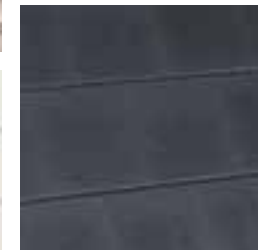
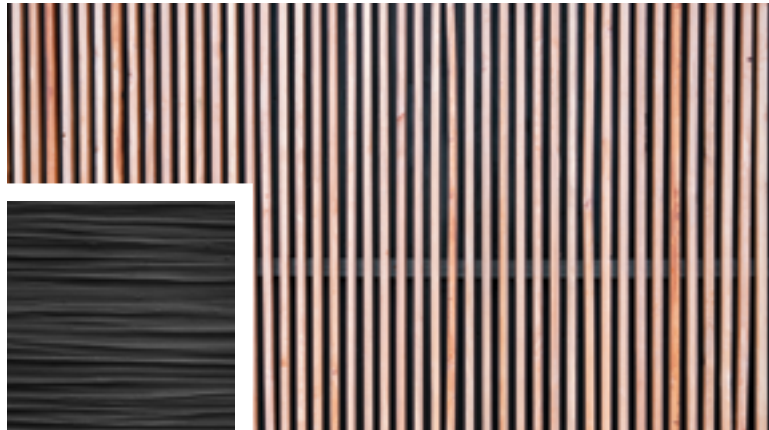
The Scandinavian style is loved for its simplicity that is full of texture and warmth. Now emerging as a strong exterior style, the Scandi home captures the essence of this trend.

Scandi utilises a mix of materials – refined slimline bricks, blonde or black stained timber and concrete are all popular finishes. The flat-style roof tile in a dark charcoal completes the Scandi exterior.

A reduced colour palette of complex whites and greys is favoured with charcoal or black providing contrast. Timber is a key material, matte and blonde, stained with a charcoal or black, white washed or a combination may be featured.

Simple A-frame, skillion or open gable structures epitomise Scandi architecture. Large steel frame windows and doors connect the home to the garden which utilises natural materials and non-flowering foliage. Personalise your Scandi exterior with plants in pots painted with simple designs or solid colour.

- 1 Certified sustainable Class 1 Charred Timber Cladding from Eco Timber Group
- 2 Climbing plants
- 3 Dome Gate Light in Smoke by Royal Botania from Lightco
- 4 Single steel door by Steel Window Design
- 5 Decorative Natural Stone Pebbles in Indo Cream from Décor Stone
- 6 Blanco Linear from the Morada range
- 7 Dulux Tranquil Retreat + Dulux Grid
- 8 Check out IKEA for the latest range of scandi outdoor planters



Concrete Horizon  
in Barramundi



Concrete Horizon in Barramundi

## Concrete

### Horizon

 C-LOC™ Colour Lock Technology

Horizon roof tiles will enhance the look of your new Scandi-designed home by featuring the ultimate flat concrete roof tile with natural concrete style that complements this kind of home. It comes standard with C-LOC™, so your roof looks better for longer.

#### Get the look

Roof pitch minimum 15° with sarking^  
A-line Ridge



Barramundi

Sambuca

Camelot

## Terracotta

### Urban Shingle

 Colour that lasts

The Urban Shingle Terracotta tile is made from natural Australian clay and fired at a temperature of over 1000°C, baking the colour right into the tile. Urban Shingle is available in a range of modern colours, and provides quality and elegance to your Scandi style home.

#### Get the look

Roof pitch minimum 18° with sarking^  
A-line Ridge



Peak

Titan

Bedrock

^Sarking must be used under 20°. Check with local government requirements.

## Solar Roofing

InlineSOLAR™

 Integrated design

Monier's latest innovation in solar roofing, InlineSOLAR™, sits within the roofline of your home, so you get all the benefits of solar without affecting the street appeal of your home. A first in the Australian market, these panels are less prone to wind or damage as they sit flush with your roof.

### Get the look

Seamlessly integrated design  
Available exclusively with all Monier roof tiles



## HOT TIP

Create a Scandi home by adding dramatically dark exterior colour palettes and interiors consisting of crisp white walls and subtle flooring shades. This style can be adapted to most Australian homes.

# iDESIGN BY CSR



## Dream it. Design it. Build it.

Visualise your dream home online with iDesign by CSR.

iDesign enables you to mix and match Monier roof tiles with PGH Bricks, fascia, gutter, trims and even garage door colours to help you visualise the exterior of your home.

Using the latest 3D technology, you can upload your own home design, or select from the pre-uploaded houses and customise every detail. It's a great place to start and is designed to make your building journey an easy and enjoyable experience, and to help you feel confident in the selection you make.

Visualise your style today: [monier.csridesign.com.au](http://monier.csridesign.com.au)



## Expect more from your roof with Monier

Anyone who has ever flown over Australian cities knows one of the most distinctive features is the sea of red tiles that covers suburbia.

The story of those rooftops - and Monier - began in 1892, when three brothers, Ernest, Julius and Frederick Wunderlich, began importing Terracotta roofing tiles to Australia from the French city of Marseilles.

Australians so loved the rich colour, raw texture, and structural integrity of crafted Terracotta that the Wunderlich trio built a factory at Rosehill and became the biggest manufacturers of terracotta roofing tiles in the nation. By 1916, the factory was producing a staggering 3 million tiles each year and became such a huge part of the cultural landscape; artist William Dobell even illustrated the company catalogues.

In the 1940's Monier met the booming housing market with the very first concrete roof tiles. These quickly took off due to their durability and good value.

At Monier we continue to innovate because we know that design trends change, and technology continues to improve the performance of roofing materials. In 2011, Monier installed the nation's very first integrated solar tile roof, setting in motion a new wave of roofing design across Australia.

For more than a century, Monier tiles have not just made Australian homes more intrinsically beautiful but have also protected us from our harsh environment.

As for the next hundred years, one thing we do know is that Monier will be thinking ahead, harnessing the sun, and sheltering us from the storm with attractively designed Australian roofs.

[monier.com.au](http://monier.com.au)





# Monier™ ROOFING

For more design advice  
or information call 1800 666 437  
or visit [monier.com.au](http://monier.com.au)



CEMINTEL®

PGH BRICKS & PAVERS™

